



From Presence to  
**POWER**



**NAVI**

**EATOR**

Where Strategy Converts into  
Global Outcomes

# Opening Statement

**This is not a phase. This is a shift.**

This is not a season of planning.

This is a phase of execution.

Across continents, decisions are being made.

Futures are being shaped.

And opportunities are no longer waiting.

At Global Scholars Migration, we are not observing this shift  
we are operating within it.

With precision.

With responsibility.

With intent.

This issue is not a record of activity.

It is a reflection of momentum in motion

where strategy is actively translating into outcomes.



# Welcome Note



## From Direction to Delivery

As we enter the most critical phase of the academic cycle, the focus is no longer on planning – it is on execution with clarity, discipline, and purpose.

At GSM Pakistan – Study Abroad Division, we are witnessing a significant shift in how students approach international education. Decisions are becoming more informed, expectations more aligned, and pathways more strategically defined.

Our role is evolving accordingly.

We are not simply guiding students toward universities – we are enabling them to make decisions that are sustainable, realistic, and aligned with long-term outcomes.

The September 2026 intake presents both opportunity and responsibility. It requires early preparation, accurate positioning, and a structured understanding of evolving global requirements.

At GSM, we are committed to ensuring that every student journey is not only successful in the short term – but meaningful in the long term.

## Tabassam Inayat Noushahi

Section Head , Study Abroad

GSM Pakistan

# Strategic Spotlight

## September 2026 is not an intake, it is a filter

The global education ecosystem is undergoing a structural shift. Institutions and immigration frameworks are no longer evaluating volume they are assessing alignment, intent, and long-term contribution.

Across Australia, the UK, Canada, New Zealand, the USA, and Europe:

- Scrutiny is increasing
- Expectations are becoming more defined
- Decision-making is becoming selective

In this environment, success is no longer about applying, it is about positioning.

At GSM, we do not process applications.

We engineer outcomes.

Every profile is assessed with intent.

Every pathway is aligned with reality.

Every decision is structured around long-term success.

**Early movers do not just participate – they lead.**



# Global Intelligence

## The world has already shifted

Australia is refining quality.

The UK is recalibrating expectations.

Canada is strengthening compliance.

New Zealand is enhancing pathway alignment.

The USA is reinforcing selectivity and institutional standards.

Europe is advancing structured and outcome-focused education pathways.

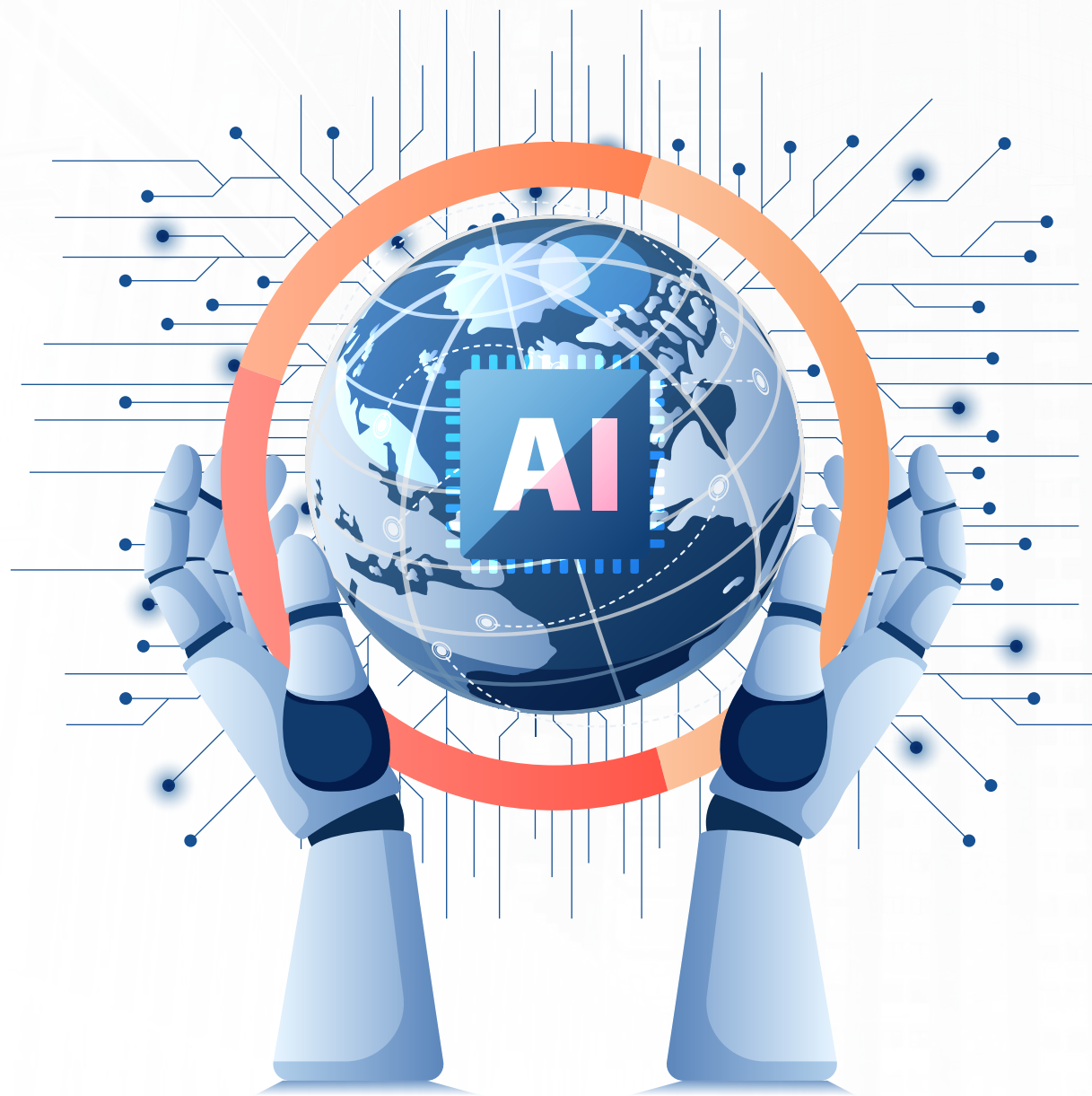
This is not restriction.

This is evolution.

At GSM, we operate at the intersection of policy, opportunity, and strategy, translating global shifts into actionable pathways.

We do not react to change.

We anticipate it, interpret it, and align our processes accordingly.



# From Conventional Processing To Structured Outcomes

## A shift from process-led execution to system-driven outcome design

In global education and migration, outcomes are shaped by a sequence of decisions – each carrying its own risks.

Failure does not occur because of a single gap.  
It occurs when multiple gaps align.

A misaligned profile.

An unsuitable course.

Weak documentation.

Improper financial structuring.

An ineffective visa strategy.

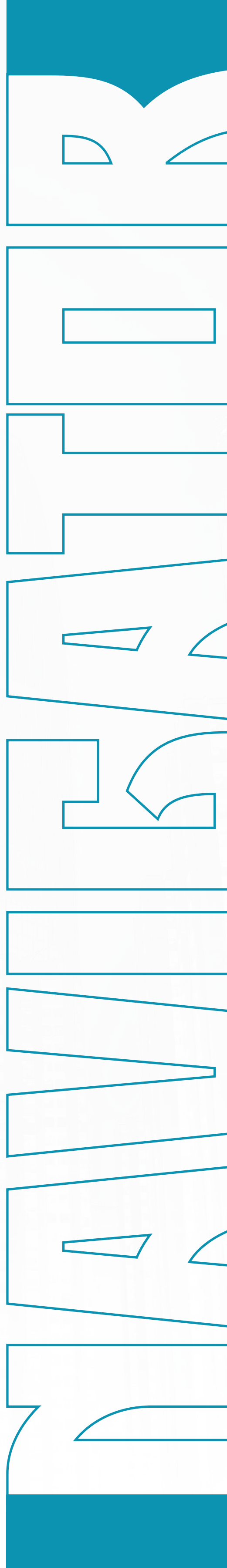
Lack of preparation for transition.

At GSM, we address this through a structured framework inspired by the Swiss Cheese Model.

Each stage is a process layer.

Each layer contains risks.

Our role is to identify and control those risks so they never align.



# THE CONVENTIONAL APPROACH

In traditional consultancy models, the student journey is treated as a sequence of independent steps.

- Profile review is conducted.
- Courses are suggested.
- Documents are collected.
- Applications are submitted.
- Visas are filed.

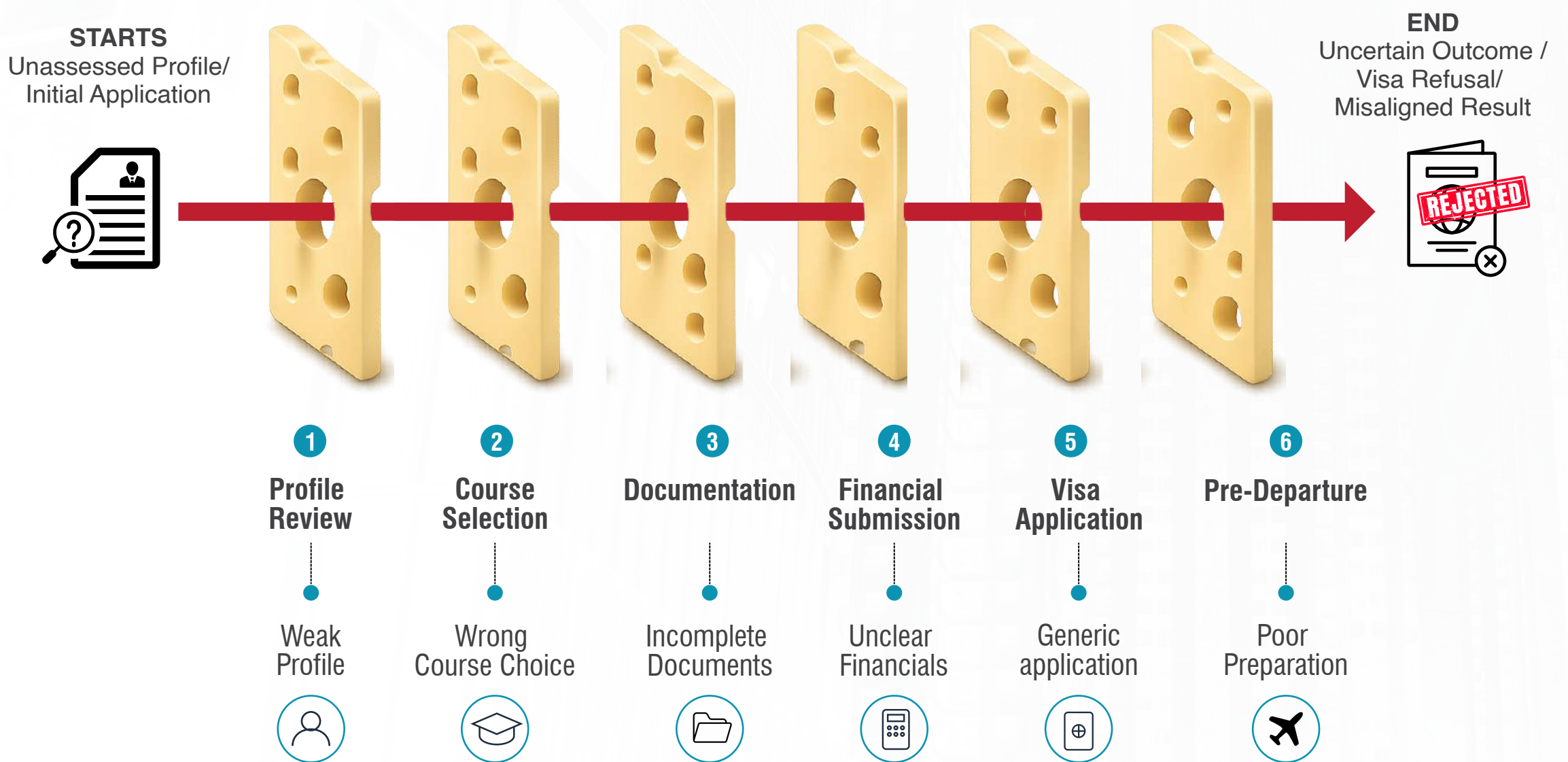
Each step is completed — but often in isolation. There is limited integration between stages, and minimal structured risk assessment across the full journey.

As global education and migration systems become more complex, this approach exposes clients to unseen risks.

Weak alignment. Inconsistent documentation. Unstructured decision-making. Individually manageable. Collectively critical.

## THE CONVENTIONAL APPROACH Unstructured Process. Uncontrolled Risk.

PROCESS WITHOUT INTEGRATED RISK CONTROL



Limited structure.

Limited risk control.

Outcome uncertainty.

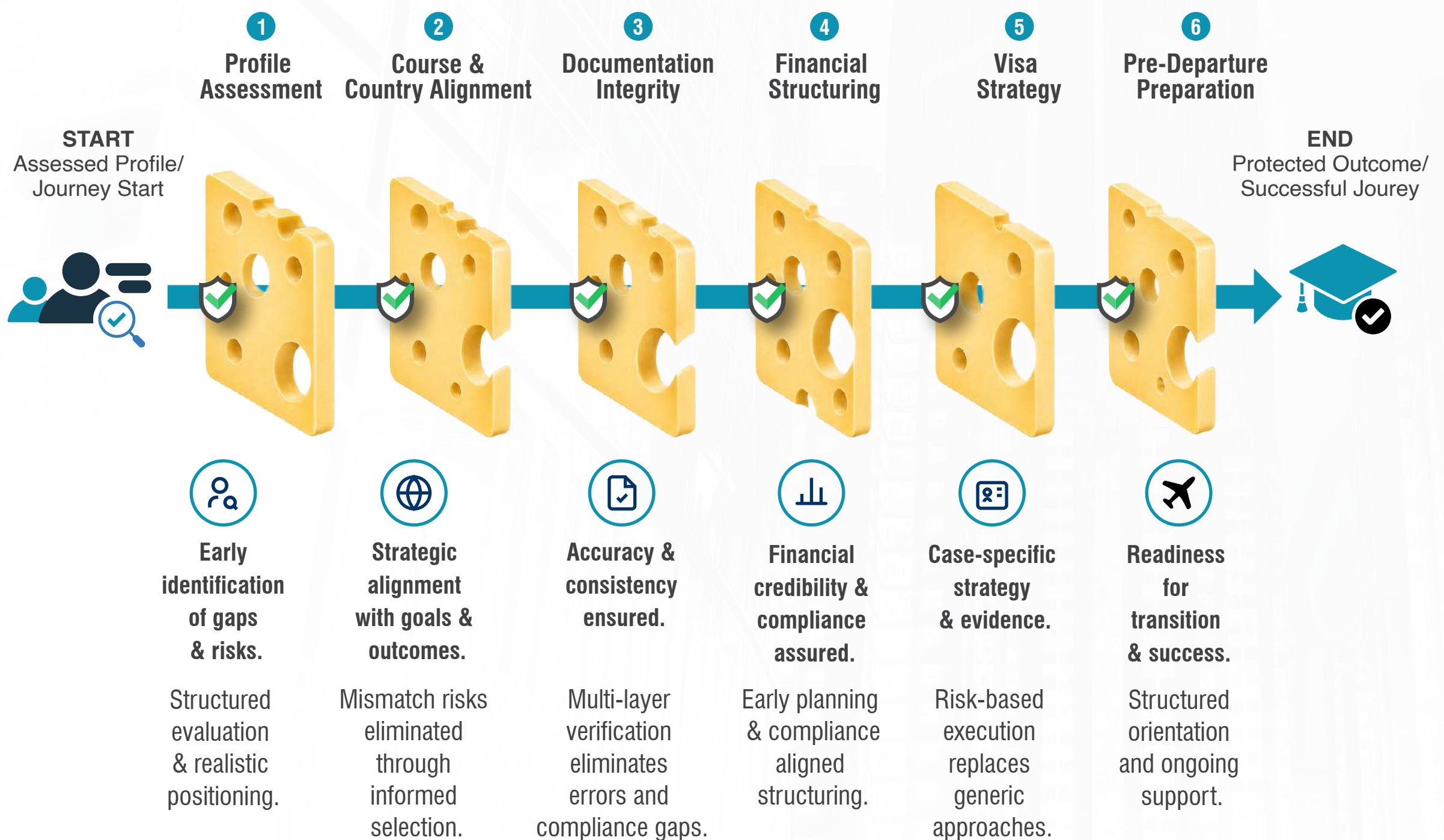
# THE GSM RISK-TO-READINESS FRAMEWORK

At Global Scholars Migration, every stage of the journey is designed as a structured control point — identifying and managing risk before it impacts the outcome.

Each step is not a task.  
It is a protection layer.

Profile assessment is structured.  
Pathways are strategically aligned.  
Documentation is verified and consistent.  
Financials are planned and compliant.

Visa strategy is case-specific.  
Preparation extends beyond approval.



Each layer reduces risk.  
Together, they prevent failure.

From processing applications to  
engineered outcomes.

# GSM NOVA

NOVA is not a platform.  
it is how GSM operates.

## INTRODUCES NOVA



It connects every journey:

- ✓ Real-time visibility
- ✓ Structured workflows
- ✓ Intelligent decision-making

✓ Student ✓ System ✓ Outcome  
This is not digital transformation.  
This is **operational evolution.**



# Skilled Migration

## Migration is a strategy, not a chance

Australia is selecting value, not volume.

Success depends on:

- Profile alignment
- Occupation relevance
- Precision in documentation

At GSM:

👉 migration is engineered

Because outcomes are not guessed —  
they are **designed**.



# Travel & Tours

## From destinations to global access

Q1 2026 marks a major milestone.

Through our participation in the **PTM Karachi Travel Mart**, GSM successfully established new international partnerships.

This expands:

- our destination network
- our global reach
- our service capabilities

We are no longer offering travel.

We are delivering global access.

From faith journeys to international exploration, GSM Travel & Tours now connects clients to more destinations, more opportunities, and more experiences than ever before.



# Partnerships

## We Build Alignment, Not Just Networks

Every partnership reflects trust.

At GSM:

- we align with institutions
- we prioritise quality
- we focus on outcomes

Because true partnerships  
are not transactional  
they are **transformational**.



# GSM Sahiwal Expo

## Connecting Futures: GSM In-House Expo

The GSM Sahiwal Expo brought together students, migration clients, travellers, and industry stakeholders under one platform.

It reflected growing trust, expanding reach, and GSM's role as a regional hub for global mobility solutions.



# Success Stories

## Outcomes are designed, not accidental

Behind every success:

- strategy
- structure
- precision

From complex cases to successful visas,  
from uncertainty to clarity

These are not stories.

They are systems **delivering results.**



# Language Programs

## Confidence is built — not taught

IELTS & PTE at GSM are performance systems.

We prepare students to:

- ✓ Compete globally
- ✓ Communicate confidently
- ✓ Succeed academically



LANGUAGE



ENGLISH



This is not training.

This is **transformation.**

# Inside GSM (People)

**We are building people  
not just systems**

**At GSM:**

- people are developed
- teams are empowered
- growth is structured

**Because when people grow:**

- 👉 systems improve
- 👉 outcomes strengthen
- 👉 institutions emerge

This is where sustainability begins.



# Future Force

## The future force of GSM

Welcoming the professionals shaping tomorrow:



**Mr. Ibtisam Ali Zafar**  
Branch Development Lead,  
Bahawalpur Division



**Ms. Rashifa Izhar**  
Senior Consultant & Student  
Advisor, Mandi Bahauddin



**Mr. Rana Daniyal**  
Senior Consultant &  
Education Counselor, Lahore



**Mr. Shahroz Khan**  
Senior Consultant &  
Education Counselor, Lahore



**Mr. Abid Ali**  
Social Media Officer



**Mr. Ghulam Mustafa**  
Public Relations Executive

 At GSM, every new addition strengthens our future.

# Thought Leadership

## The future is integrated

✓ Education    ✓ Migration

✓ Skills        ✓ Travel

These are no longer separate systems.

They are one ecosystem.

And GSM is building it.



# CEO Message

## From momentum to mastery

The first quarter of 2026 marks a defining transition for GSM.

We are no longer building momentum, we are executing at scale.

Across education, migration, and mobility, our focus remains clear:

- ✓ precision
- ✓ sustainability
- ✓ outcomes

But at the heart of this journey is something deeper, our people. We are investing in talent, building capabilities, and creating an organisation where individuals grow into leaders.

Because when people grow, institutions emerge. At GSM, we are not just growing.

We are evolving, responsibly, strategically, & sustainably. The future is not something we wait for. It is something we build together.

### **Abid Raza Khan**

Chief Executive Officer  
Global Scholars Migration






GSM is not preparing for the future.  
GSM is positioning itself to define it.




**BRIDGING WORLDS  
BUILDING  
*Futures!***


 **Lahore**

 Building No. 3, Block A/2,  
Tipu Sultan Road, Gulberg III, Lahore


 +92 370 3510309 | 042 37824003

 **Sahiwal**

 1st Floor, Alpha Tower,  
High Street Sahiwal

 +92 300 4635490 | 040 4228010

 **Australia Headquarter**

 Level 9, 115 King William St,  
Adelaide SA 5000, Australia

 +61 414 074 870  +61 410 374 207